



**CALHOUN
LIBERTY**
HOSPITAL

A TALLAHASSEE MEMORIAL HEALTHCARE AFFILIATE

2022 Community Health Needs Assessment

*Updated to include:
2023 Implementation Strategy Plan*

Conducted By:



TABLE OF CONTENTS

INTRODUCTION.....	2
CALHOUN LIBERTY HOSPITAL MISSION, VISION AND VALUES	3
EXECUTIVE SUMMARY	4
COMMUNITY HEALTH NEEDS ASSESSMENT – RECAP ..	5
SERVICE AREA.....	8
COMMUNITY HEALTH INDICATORS	10
County Health Rankings & Roadmaps.....	10
Mortality Rates	12
Cancer Incidence Rates.....	12
Rural Health Information Hub - SDOH.....	13
PRIORITIZATION OF HEALTH NEEDS	14
DOCUMENTING AND COMMUNICATING RESULTS	15
APPENDIX A – 2017-2019 CHNA IMPLEMENTATION PLAN	ERROR! BOOKMARK NOT DEFINED.
APPENDIX B – 2020 CHNA IMPLEMENTATION PLAN	ERROR! BOOKMARK NOT DEFINED.

INTRODUCTION

The Community Health Needs Assessment (CHNA) became a requirement of all tax exempt (501(c)(3)) hospitals beginning with fiscal year 2013. As part of the IRS Form 990, Schedule H, individually licensed not-for-profit hospitals are required to assess the health needs of their community, prioritize the health needs, and develop implementation plans for the prioritized health needs they choose to address. Reports on progress with the Implementation Plans are required to be submitted annually. Every three years, this process must be repeated.

CALHOUN LIBERTY HOSPITAL

MISSION, VISION AND VALUES

MISSION

Calhoun-Liberty Hospital is founded on the following beliefs:

- *To provide the most dedicated and advanced primary, preventive, and diagnostic healthcare to the communities we serve.*
- *To provide quality patient care at the most reasonable cost.*
- *To provide, promote, and support community involvement in the delivery of healthcare in the communities we serve.*

VISION

Calhoun-Liberty Hospital will develop a culture that engages citizens and organizations in becoming a healthier community. We are dedicated to the growth of community-centered rural health care delivery systems and to the survival of our rural hospitals through the Critical Access Hospital program. Calhoun Liberty Hospital will serve our communities with exceptional quality, innovative health services, and promote wellness with highly trained physicians and staff members.

GOALS

To design a progressive healthcare [system] that will focus upon the enhancement of localized, affordable, and personal quality care in our community.

Calhoun-Liberty Hospital is dedicated to the delivery of quality services to our patients, comfort to their families and providing a rewarding working environment for our employees.

EXECUTIVE SUMMARY

In 2022, Calhoun-Liberty Hospital (CLH) participated in the Community Health Assessment for the Florida Departments of Health for Calhoun County and Liberty County. While the hospital has been operational and rebuilding services since it was struck by Hurricane Michael in 2018, CLH has leaned on community partnerships to expand service offerings and address the health needs of the community.

The prioritized health needs for CLH were re-affirmed through the Community Health Assessment process for the local Florida Departments of Health. This 2022 CHNA for CLH carries forward the prioritized health needs from 2019 as ongoing areas of focus to improve community health status indicators. The prioritized health needs for the Implementation Plan include addressing:

- *Access to Health Care*
- *Chronic Care Management (formerly Obesity)*
- *Mental Health and Substance Abuse*

This retro-dated 2022 CHNA for CLH builds off the Community Health Assessments for the Florida Departments of Health in Calhoun/Liberty Counties and includes an Implementation Strategy Plan for 2022 - 2025.

COMMUNITY HEALTH NEEDS ASSESSMENT – SUMMARY

The following is a direct excerpt from the 2022 – 2025 Community Health Assessments for the Florida Departments of Health in Calhoun County and Liberty County as well as the December 2022 – 2023 Community Improvement Plans for the Departments of Health in Calhoun County and Liberty County:

Community Health Assessment Review

In 2022, through the Community Health Assessment-Community Improvement Plan Initiative, the Florida Departments of Health in Calhoun County and Liberty County launched a major initiative to better understand the health needs of the community and develop programs and policies to address these needs. This collaborative, participatory process has several overarching goals, including:

- 1. Complete a comprehensive Community Health Assessment (CHA) that will identify the county's strengths and challenges in providing a healthy environment for all residents and workers.*
- 2. Develop a Community Health Improvement Plan (CHIP) that will serve as a blueprint for improving the health of the county over the next three years.*
- 3. Engage partners, organizations, and individuals in creating a vision for a healthy Calhoun County and Liberty County and making that vision a reality.*

The CHA utilizes a participatory, collaborative approach to look at health in its broadest context, specifically the larger social and economic factors that have an impact on health as well as how these characteristics disproportionately affect certain populations. Community health assessment methods includes the Mobilizing for Action through Planning & Partnerships (MAPP) process which was utilized to conduct the CHA. The MAPP process is a community-driven strategic planning

process for improving community health and is comprised of four individual assessments.

The Florida Departments of Health in Calhoun County (DOH Calhoun) and Liberty County (DOH Liberty), community partners, and residents have come together to identify the health priority. Both Calhoun County and Liberty County have a significantly high overweight and obesity rate (70.2% and 71.0%, respectively) which is the gateway to hypertension and Type 2 Diabetes.

The communities both adopted **OBESITY**, a chronic disease, as the 2022 health priority.

Key Assessment Findings of the Communities

Calhoun County	Liberty County
<ul style="list-style-type: none"> Significantly higher overweight and obesity rate (70.2%) 	<ul style="list-style-type: none"> Unemployment rate of 8.2%
<ul style="list-style-type: none"> African American population holds the highest obesity rate at 50% 	<ul style="list-style-type: none"> Low-income residents with limited access to healthy food is 25.7%
<ul style="list-style-type: none"> In 2019, 45% of middle and high school students were overweight or obese compared to 27% in 2010. 	<ul style="list-style-type: none"> Seniors with limited or uncertain access to healthy food is 30.5%
<ul style="list-style-type: none"> Food insecurity is highest among children in school from K – 12th grade 	<ul style="list-style-type: none"> 34.6% of children at school have low access to healthy food
<ul style="list-style-type: none"> The elderly (at least 65 years of age) make up 16% of the population and 30% of them are considered obese 	<ul style="list-style-type: none"> Households receiving cash public assistance or food stamps in Liberty County is at 26.5% (2020)
<ul style="list-style-type: none"> The teen pregnancy rate is higher than the State with most occurrences occurring in the African American population. 	<ul style="list-style-type: none"> Liberty’s rate of obese children from 2-5 years of age has significantly increased from 11% to 19% in seven years
<ul style="list-style-type: none"> Cancer and heart disease effect all ethnicities in Calhoun County 	<ul style="list-style-type: none"> The amount spend on housing and transportation is 62.6% of income
<ul style="list-style-type: none"> 42.6% of Calhoun County is considered low income with 16.3% of the population below the poverty level. 	<ul style="list-style-type: none"> The number of residents identified as low income is significantly high at 47.2%
	<ul style="list-style-type: none"> There are no family practice physicians in Liberty County
	<ul style="list-style-type: none"> Racial segregation in Liberty County has increased significantly since 2019.

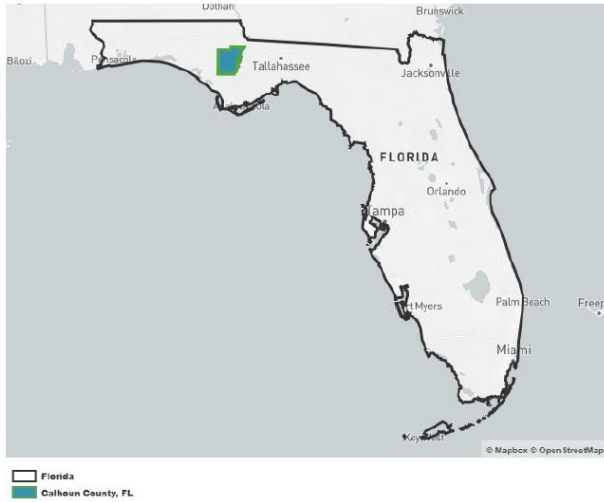
Advisory Structure and Engagement Process

Collaborating partners in the completion of the CHA reports include DOH Calhoun, DOH Liberty, local non-profit organizations, and local government agencies. This multi-sector representation of community partners and stakeholders was formed during the CHA. The Community Health Advisory Group (CHAG) will be instrumental in developing the county's Community Health Improvement Plan (CHIP).

Through a review of data and qualitative input from the community, the Community Health Assessments identified significant health needs for Calhoun County and Liberty County. In the development of this CHNA, Calhoun Liberty Hospital, leveraged the Community Health Assessments and supplemented with additional quantitative and qualitative feedback from hospital stakeholders to arrive at the prioritized health needs for the Implementation Plan.

SERVICE AREA

The service area for CLH is defined as Calhoun County, FL, and Liberty County, Florida.



Service Area Demographics

Both Calhoun County and Liberty County are sparsely population areas in Northwest Florida.

Table 1: Service Area Demographic Snapshot

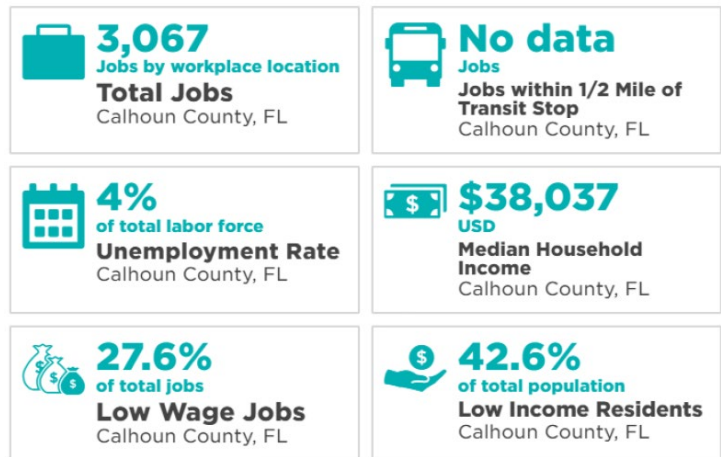
	Calhoun County	Liberty County
Square Miles	567	843
Residents	14,324	8,333
Median Age	41.9 years	40.6 years
Adults 65+ Age	16%	13%
Population: Men	55%	59%
Population: Women	45%	41%

In Calhoun County, the population has shifted where in 2016, 84% of the county residents were identified as White. In 2020, 77.3% of residents identify as White. Liberty County also experienced the same shift but to a lesser degree with 78% of the population identify as White

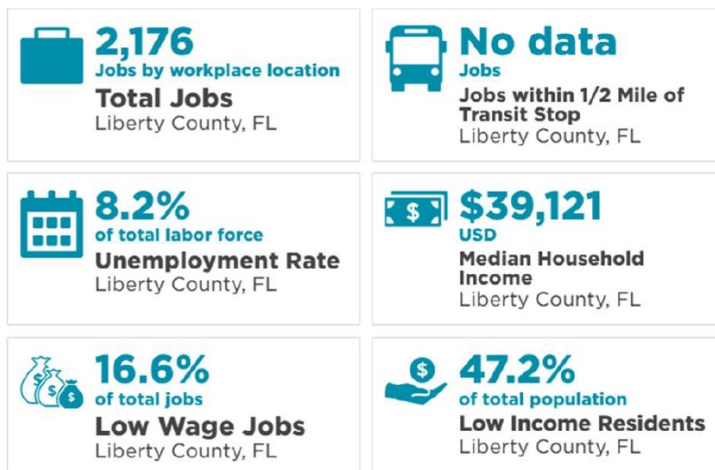
in 2016 and 75% identifying as White in 2020. People of color make up 23% of the overall population in Calhoun County and 25% of the overall population in Liberty County. African Americans represent the largest cohort of people of color (13.3% in Calhoun County and 13.7% in Liberty County), followed by Hispanics (6% in Calhoun County and 4.6% in Liberty County).

Economic Characteristics

Calhoun County’s unemployment rate is 4% compared to the State of Florida unemployment rate of 7%. The median household income of \$38,073, is significantly less than the State median household income of \$61,777. Over 40% of the county residents are considered low income.



Sources: EPA Smart Location Database 2019; US Census Bureau ACS 5-year 2016-2020
 Note: Low wage jobs are as those where workers earn \$1250/month or less. Low income residents is defined as the population that is living 200% or below poverty level.



Sources: EPA Smart Location Database 2019; US Census Bureau ACS 5-year 2016-2020
 Note: Low wage jobs are as those where workers earn \$1250/month or less. Low income residents is defined as the population that is living 200% or below poverty level.

Liberty County’s unemployment rate of 8.2% is higher than the State of Florida unemployment rate of 7%. The median household income of \$39,121, compared to \$61,777 for the State. 47% of county residents are considered low income.

COMMUNITY HEALTH INDICATORS

Health measures were collected from various sources to highlight the general health of the CLH service area. The Counties within the CLH service area are included in the analysis below.

COUNTY HEALTH RANKINGS & ROADMAPS

The County Health Rankings & Roadmaps program is a collaborative between the Robert Wood Johnson Foundation and the University of Wisconsin Population Health Institute. The program collects health data annually to bring awareness to the factors that influence health and strategies for improving the health of communities.

The table below includes select measures from the 2022 County Health Rankings & Roadmaps.

Table 2: Service Area County Health Rankings – Select Measures

	Calhoun County (FL)	Liberty County (FL)	FL
Health Outcomes			
Ranking (out of 67)	35	34	
Premature death	8,400	8,500	7,500
Quality of Life			
Poor to Fair Health	25%	28%	18%
Low Birthweight	9%	8%	9%
Health Behaviors			
Adult Smoking	25%	26%	15%
Adult Obesity	36%	35%	26%
Access to exercise opportunities	15%	21%	87%
Excessive drinking	21%	21%	22%
Alcohol-impaired driving deaths	21%	33%	22%
Sexually transmitted infections <small>Newly diagnosed chlamydia cases per 100,000 of population</small>	467.9	335.2	515.9
Teen births <small>Number of births per 1,000 female population ages 15-19</small>	37	40	18

Source: 2022 County Health Rankings & Roadmaps (www.countyhealthrankings.org)

The County Health Rankings define Premature Death as leading causes of death for those under the age of 75 within the categories of malignant neoplasms, diseases of the heart, accidents (unintentional injuries), chronic lower respiratory diseases and intentional self-harm (suicide). This data is age-adjusted to ensure it is comparable across counties.

The rate of premature deaths in Calhoun County and Liberty County is significantly higher compared to the State. Calhoun County ranks 35 of 67 counties in Florida in terms of “healthiest,” or least healthy with higher rates of smoking and obesity, and less access to exercise opportunities. This is an improvement of from their ranking of 58 in the last CHNA.

Liberty County’s health ranking in 2019 was 18 of 67 counties. For 2022, Liberty County’s health ranking is now 34, representing a decline of health attributed to higher rates of smoking and obesity.

Clinical Care measures were also reviewed for the service area counties.

Table 3: Service Area County Health Rankings – Clinical Care Measures

	Calhoun County (FL)	Liberty County (FL)	FL
Clinical Care			
Uninsured	16%	15%	16%
Primary Care Physicians	2,820:1	-	1,370:1
Dentists	1,760:1	4,180:1	1,630:1
Mental Health Providers	2,820:1	320:1	550:1
Preventable Hospital Stays	5,017	5,024	4,203
Mammography Screening	33%	40%	44%
Flu Vaccinations	25%	24%	45%

Source: County Health Rankings & Roadmaps (www.countyhealthrankings.org)

Based on these measures, there is significant opportunity to increase the availability of primary care services in Calhoun and Liberty Counties to drive preventative screenings and provide a gateway to managing mental health needs.

MORTALITY RATES

Mortality rates from the National Center for Health Statistics indicates the service area population has an overall higher mortality rate as compared to the State of Florida. For both Calhoun and Liberty Counties, the heart disease is the leading cause of death.

Table 4: Service Area Counties – 2021 Mortality Rates

Age Adjusted Death Rates	Calhoun County (FL)	Liberty County (FL)	FL
Coronary Heart Disease	254.9	242.0	144.1
Cancer	163.0	147.0	137.7
Chronic Lower Respiratory Disease	58.5	37.1	30.7
Influenza and Pneumonia	-	20.4	8.4
Stroke	45.8	18.7	43.7
Diabetes	52.5	18.7	24.2
Homicide	8.7	13.8	7.3
Suicide	13.1	43.7	13.8

Source: <https://flhealthcharts.com/ChartsReports/rdPage.aspx?rdReport=ChartsProfiles.LeadingCausesOfDeathProfile>

CANCER INCIDENCE RATES

In reviewing cancer incidence data in the service area compare to the State of Florida, lung cancer rates are higher in Calhoun and Liberty Counties as compared to the State incidence rate. Breast cancer rates in Calhoun County are much higher than in Liberty County and the State rate.

Table 5: Service Area Counties – Cancer Incidence

Age Adjusted Cancer Incidence	Calhoun County (FL)	Liberty County (FL)	FL
All Cancers (2020)	407.50	448.7	431.2
Prostate (2020)	43.4	62.9	87.3
Lung (2020)	73.3	119.7	50.5
Breast (2020)	157.3	51.4	119.3
Cervical cancer (2020)	37.4	-	8.6
Skin (2020)	8.3	-	24.3

Source: <https://flhealthcharts.gov>

RURAL HEALTH INFORMATION HUB - SDOH

Table 6: Social Determinants of Health

	Calhoun County (FL)	Liberty County (FL)	FL (non-metro)
SDOH			
18-24 Year Olds Without a High School Diploma	38.3%	28.9%	24.9%
Low Access to Healthy Food (2019)	83.4%	25.2%	45.2%
Median Household Income	\$41K	\$44K	\$47K
Personal Income \$100K and Over	12.8%	16.1%	18.8%
Personal Income Under \$25K	33.8%	30.7%	25.2%
Population Without a High School Diploma	22.3%	23.0%	18.1%
Poverty	20.6%	21.3%	18.9%
Unemployment Rate	4.5%	4.2%	4.4%

Source: Rural Health Information Hub via data from the US Census ACS, 2010, 2016, 2021 5-year estimates; USDA Economic Research Service, 2017-2021 (low access to health food); and the US Census Small Area Income and Poverty Estimates, 2009-2019.

Calhoun County has a significantly higher rate of “low access to healthy foods” compared to Liberty County and the Non-Metro areas of the State. Low access to healthy food is measured by residents’ proximity to the nearest supermarket (more than 10 miles).

PRIORITIZATION OF HEALTH NEEDS

In consideration of the quantitative as well as qualitative feedback, the following community health needs were identified and prioritized:

- *Access to Health Care*
- *Chronic Care Management*
- *Mental health/substance abuse*

DOCUMENTING AND COMMUNICATING RESULTS

Per IRS guidelines, this CHNA report will be made available to the general public via the CLH website: <https://www.calhounlibertyhospital.com/>

A hard copy of this report may be reviewed at the hospital by making a request with Administration at CLH.

CLH will also provide in its annual IRS Schedule H (Form 990) the URL of the webpage on which it has made the CHNA Report and Implementation Strategy Plan widely available to the public. CLH will include a report of the actions taken during the fiscal year to address the significant health needs identified through its most recent CHNA, and provide reasoning for the health indicators identified but not addressed by the organization.

APPROVAL

The 2022 Calhoun Liberty Hospital Community Health Needs Assessment was approved by the Calhoun Liberty Hospital Board of Directors on the _____**[DATE]**.

APPENDIX A – 2022 – 2025 CHNA IMPLEMENTATION PLAN

Identified Health Need	Goals	Results
<p>Access to health care</p>	<ul style="list-style-type: none"> • <i>Increase the number of adults and children in Calhoun and Liberty Counties who access primary care services by 10%.</i> <ul style="list-style-type: none"> ○ Continue recruitment of primary care providers to the service area. ○ Grow patient visits for CLH providers 15% from 2022 – 2025 	<ul style="list-style-type: none"> • CLH added another physician to its medical staff in 2022 • For CLH providers, patient visits have grown steadily over the last 4 years: <ul style="list-style-type: none"> ○ 2019 = 8,900 visits ○ 2020 = 7,390 visits ○ 2021 = 8,340 visits ○ 2022 = 9,481 patient visits ○ Q1–Q3 2023 = 8,701 patient visits • Expanded office hours, now starting at 7:30 AM and seeing patients until 5:00 PM. Updated schedules to allow up to 20% of schedule to accommodate walk-in patients. • CLH clinics participates in the Vaccines for Children program, administering 35 vaccines in 2022 • CLH is partnering with the Rural Hospital Association and area Health Departments to increase access through implementation of paramedicine program for high-risk obstetric services. • Partnering with Big Bend Hospice on expanding hospice services to community members

		<ul style="list-style-type: none"> • CLH is evaluating the expansion of service offers to include Chronic Care Management and Transition of Care management in 2024. • CLH continues to provide on-site school physicians for students in the Calhoun and Liberty schools. <ul style="list-style-type: none"> ○ 392 students served in 2022 ○ 380 students served in 2023 • CLH partnered with Sheldon Trucking (local business) to administer flu vaccinations • CLH is evaluating the addition of a clinic with behavioral health services in Bristol. • CLH has also added the following services to improve the health of the community: <ul style="list-style-type: none"> ○ Wound care ○ Psychiatry per telehealth ○ Infusion service ○ Partnered with local Federally Qualified Health Center to offer mammography services. <ul style="list-style-type: none"> ▪ 2022 = 47 mammography studies ▪ 2023 = 232 mammography studies, with 37 completed as part of the FQHC voucher program ○ Pulmonary rehabilitation services to address needs of patients with Long COVID ○ Partnership with TMH to offer telehealth cardiology, including ECHOs due to the increased prevalence of congestive heart failure
--	--	--

<p>Chronic Management</p>	<p>Care</p> <ul style="list-style-type: none"> • <i>Reduce obesity rates by 10% in Liberty County and Calhoun County by 2025</i> <ul style="list-style-type: none"> ○ About 70% of Calhoun County adults were obese in 2020 ○ About 71% of Liberty County adults were obese in 2020 	<ul style="list-style-type: none"> • Started a partnership with Sodexo Food Services in March 2022 for nutritional counseling <ul style="list-style-type: none"> ○ Community members are able to access nutritional counseling services through a CLH clinic visit and referral • Referrals to endocrinologists to address weight-related issues <ul style="list-style-type: none"> ○ 2022 = 40 referrals ○ Q1-Q3 2023 = 38 referrals • Completed 380 school physicals in 2022 and provided counseling and resources on identified health needs • Partnered with the Blountstown football team on nutritional counseling and provided supplements • Working with the State Health Information Exchange on improved tracking of referrals. Slated for go-live in Q1 2024.
<p>Mental health/substance abuse</p>	<ul style="list-style-type: none"> • <i>Increase awareness and education about substance use in youth.</i> <ul style="list-style-type: none"> ○ By 2025, reduce the 2022 Calhoun County Health Ranking, Health Outcomes measure of "Frequent mental distress" by 5% from 19% to 18%. ○ By 2025, reduce the 2022 Liberty County Health Ranking, Health Outcomes measure of "Frequent mental distress" by 5% from 19% to 18%. • <i>Increase awareness of mental health and substance abuse resources.</i> 	<ul style="list-style-type: none"> • CLH has a physician who is certified in suboxone treatments, and the organization is in the early stages of evaluating a suboxone clinic/services. • Local Federally Qualified Health Clinics have partnered with the Calhoun County and Liberty County schools to provide behavioral telehealth services. • CLH is evaluating the addition of a clinic with behavioral health services in Bristol. • CLH has partnered with Tallahassee Memorial Hospital to connect patients of all ages to mental health providers and facilities when needed.

	<ul style="list-style-type: none"> ○ By 2025, the percent of the general population that access available mental health resources will increase by 5% over the 2022 baseline. 	<ul style="list-style-type: none"> • The CLH Emergency Department continues to treat acute behavioral health conditions. In 2022, the Emergency Department saw 157 patients for behavioral health conditions and through Q3 20223, 148 patients were seen for behavioral health conditions. • Both the Emergency Department and Inpatient unit utilization telehealth services to augment therapies providing while treating medical conditions.
--	--	--

APPENDIX B: COMMUNITY HEALTH RESOURCES

As a requirement of the CHNA, a list of health resources has been included for reference and community awareness.

- ***Calhoun Liberty Hospital***
- ***Calhoun Liberty Hospital Primary Care Clinic***
- *Florida Department of Health, Calhoun County*
- *Florida Department of Health, Liberty County*
- *Apalachee Center, Liberty County Clinic*
- *Blountstown Heath and Rehabilitation Center*
- *Chipola Healthy Start*
- *Encompass Health Home Health*
- *Enhabit Home Health and Hospice*
- *Healthy Start*
- *Liberty Community Health Care (Hosford and Bristol)*
- *Life Management Center (based out of Marianna but serves Calhoun County)*
- *Medical Center of Blountstown*
- *Myron Schrock, DDS*
- *PanCare Health Medical*
- *Panhandle Rural Health and Primary Care*
- *Panhandle Therapy Center*
- *River Valley Rehabilitation Center*
- *Rivertown Community Church (counseling services)*